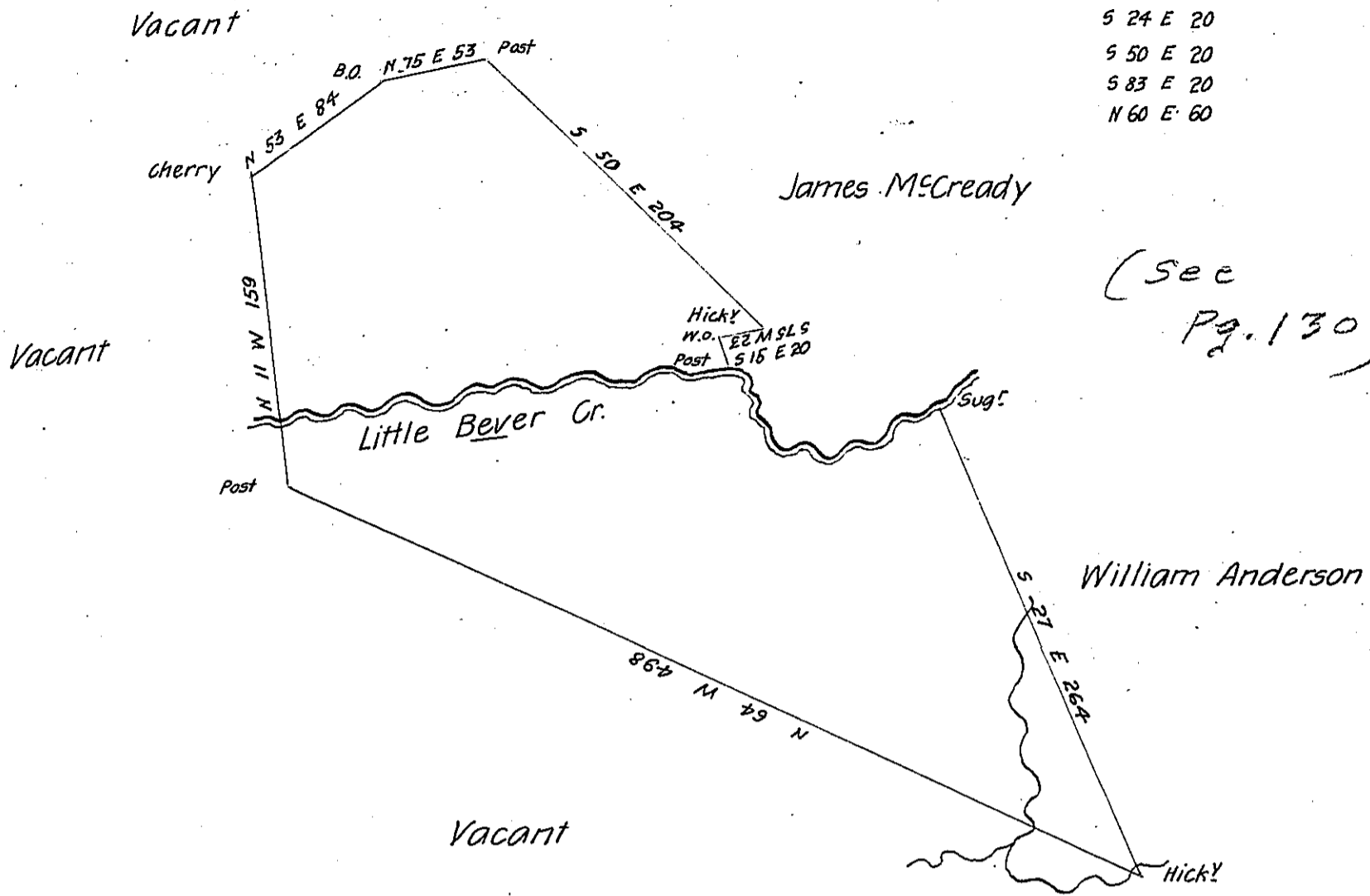


Courses &c. Up. Cr.

- S 42 E 20
- S 24 E 20
- S 50 E 20
- S 83 E 20
- N 60 E 60

(Use 130)



The above is a Draught of a Tract of Land Situate on the West side of the Ohio River Survey'd the 20<sup>th</sup> of April 1793 in pursuance of a Warrant ~~granted~~ granted to Hugh Martain and William Martain dated the 30<sup>th</sup> March 1793 Called Peaceable Containing 440 Acres 111 perches with 6 P. Cent allowance for Roads &c. Warrant Enter'd Ap! 15<sup>th</sup> 1793 in the Survey Book

Jn<sup>o</sup> Hoge D.S.

Dan! Broadhead Esq!  
S. G! of Pennsylvania

IN TESTIMONY that the above is a copy of the original remaining on file in the Department of Internal Affairs of Pennsylvania, made conformably to an Act of Assembly approved the 16th day of February, 1833, I have hereunto set my Hand and caused the Seal of said Department to be affixed at Harrisburg, this twenty third day of February 1906

*Samuel J. ...*  
Secretary of Internal Affairs.